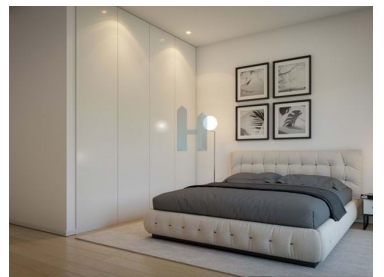





## Portimão - Apartment



 2  
Bedrooms

 2  
Bathrooms

 138,97  
Area (m<sup>2</sup>)

  
Garage

  
Swimming Pool

**380 000 €**  
(EUR €)



**Luís Gonçalves**

916367633 <sup>2</sup>

lgoncalves@thepenthouse.pt

T +351 282 431 253 <sup>1</sup> · E info@thepenthouse.pt  
Rua do Sol, Ed. Elite Residence, Loja A, 8500-411 Portimão  
AMI 20698

<sup>1</sup> (Call to national fixed network) | <sup>2</sup> (Call to national mobile network)



## Property Features

- Equipped kitchen
- Dishwashing machine
- Air conditioning
- Garden
- Private condominium
- Lift
- Electric shutters
- Barbecue
- Security door
- Garage
- Mains water
- Washing machine
- Fitted wardrobes
- Pool
- Proximity: Golf course, Shopping, Restaurants, City, Open field, Public Transport, Schools, Playground
- Video entry system
- Double glazing
- Quiet Location
- Balcony
- Terrace
- Solar orientation: North, South
- Main drainage



**Luís Gonçalves**

916367633 <sup>2</sup>

lgoncalves@thepenthouse.pt

**T +351 282 431 253 <sup>1</sup> · E info@thepenthouse.pt**  
**Rua do Sol, Ed. Elite Residence, Loja A, 8500-411 Portimão**  
**AMI 20698**

<sup>1</sup> (Call to national fixed network) | <sup>2</sup> (Call to national mobile network)