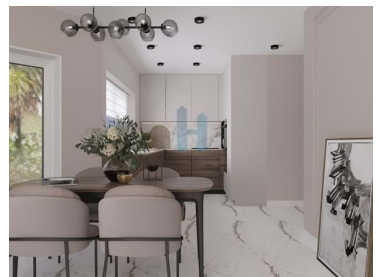
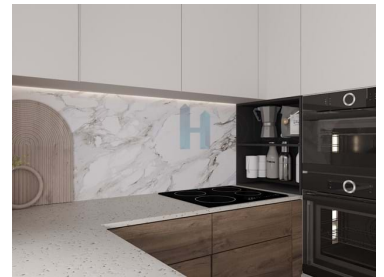




## Armação de Pêra - Apartment



**2**  
Bedrooms

**2**  
Bathrooms

**105,8**  
Area (m<sup>2</sup>)

**440 000 €**  
(EUR €)

### 2nd floor, Luna Mar Building

Welcome to Luna Mar, your seaside getaway in Armação de Pêra. This 2 bedroom, 2nd floor, luxury apartment is currently under construction ( delivery expected in March 2025) promises to be your next dream address. With stunning sea views and a central location, this property offers the perfect balance of tranquility and convenience.

As you explore the surrounding area, you'll discover the proximity to paradisiacal beaches, such as Armação de Pêra Beach and Beijinhos Beach, perfect for relaxing and enjoying the Algarve sunshine. In addition, the variety of restaurants just a few steps away invite you to explore the vibrant culinary scene of the region.

With a total area of 105.80 square meters, this apartment includes a large balcony ideal for enjoying the mild climate of the Algarve. Two parking spaces in the garage will allow the whole family to have



**Artem**

968137818 <sup>2</sup>

artem@thepenthouse.pt

**T +351 282 431 253 <sup>1</sup> · E info@thepenthouse.pt**  
**Rua do Sol, Ed. Elite Residence, Loja A, 8500-411 Portimão**  
**AMI 20698**

<sup>1</sup> (Call to national fixed network) | <sup>2</sup> (Call to national mobile network)



their cars safely. Equipped with air conditioning, washing machine, dishwasher, fridge and fully equipped kitchen, ensuring maximum comfort and convenience.

Additionally, the proximity to shops, pharmacies, schools, and public transportation make this apartment a perfect option for those looking for a quiet lifestyle but with easy access to all essential amenities. Thermal insulation "bonnet", windows and high quality materials, energy certification A and solar orientation south, this property offers the best in terms of energy efficiency and luminosity.

Centrally located, close to beaches, restaurants, and services, this apartment in Luna Mar building is a unique opportunity for those looking to live the luxurious and relaxed lifestyle of the Algarve or monetize. Come and discover what this charming coastal town has to offer and make this apartment your next dream residence.

## Property Features

- Equipped kitchen
- Oven
- Washing machine
- Fridge
- Fitted wardrobes
- Laminated floor
- Built year: 2025
- Kitchenette
- Video entry system
- Double glazing
- Electric garage gate
- Quiet Location
- Parking space
- Security door
- Solar orientation: South
- Main drainage
- Stove
- Extractor
- Dishwashing machine
- Thermoaccumulator
- Air conditioning
- Proximity: Beach, Shopping, Restaurants, City, Pharmacy, Public Transport, Schools
- Drive way
- Views: Sea views, City view, Urbanization view
- Lift
- Electric shutters
- Walking distance to beach
- Central location
- Balcony
- Energetic certification: A
- Mains water



**Artem**

968137818 <sup>2</sup>

artem@thepenthouse.pt

T +351 282 431 253 <sup>1</sup> · E [info@thepenthouse.pt](mailto:info@thepenthouse.pt)  
Rua do Sol, Ed. Elite Residence, Loja A, 8500-411 Portimão  
AMI 20698

<sup>1</sup> (Call to national fixed network) | <sup>2</sup> (Call to national mobile network)