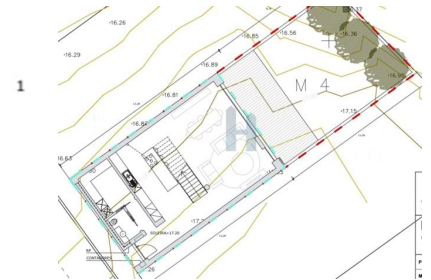
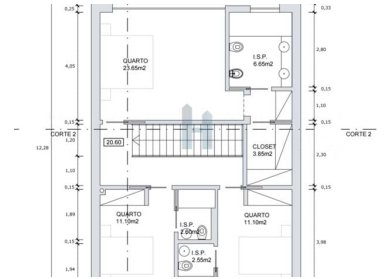
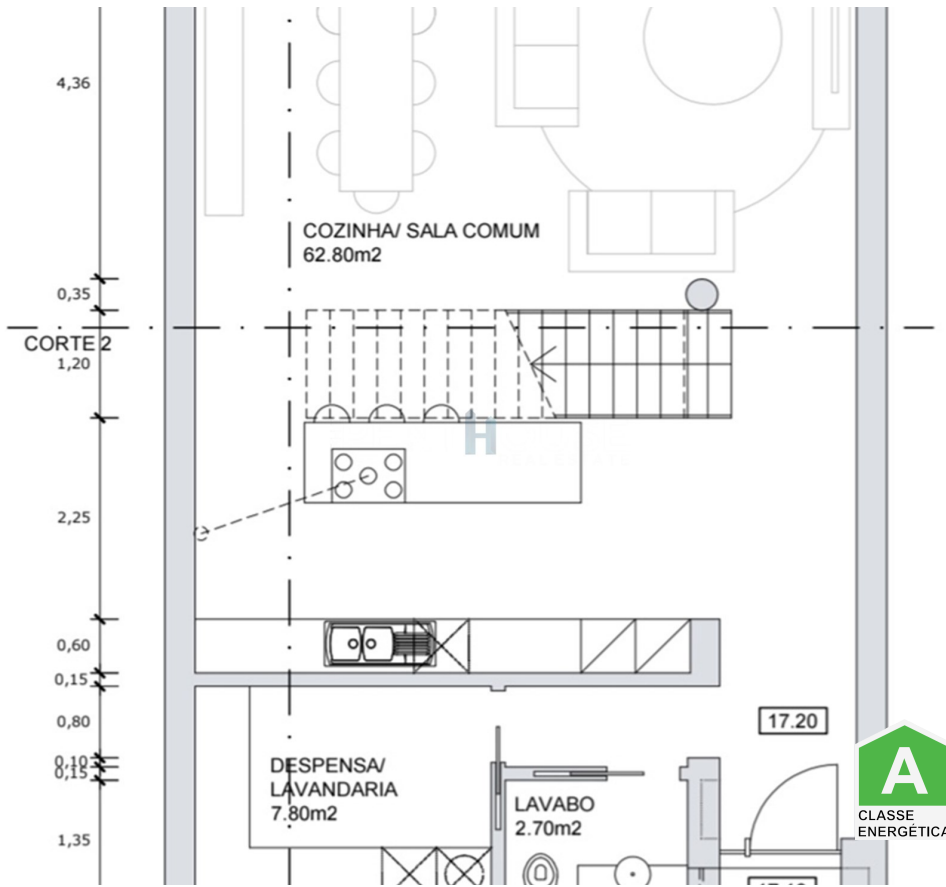




## Estômbar e Parchal - Villa



3

soverom



4

Badene



200

Område (m<sup>2</sup>)



176

Land areal (m<sup>2</sup>)



CLASSE ENERGETICA

**490 000 €**

(EUR €)

## Egenskaper

- Energisertifisering: A



**Jorge Marrachinho**

925412292 <sup>2</sup>

jorge.m@thepenthouse.pt

T +351 282 431 253 <sup>1</sup> · E info@thepenthouse.pt  
Rua do Sol, Ed. Elite Residence, Loja A, 8500-411 Portimão  
AMI 20698

<sup>1</sup> (Ring til nasjonalt fastnett) | <sup>2</sup> (Nasjonalt mobilnettnett)